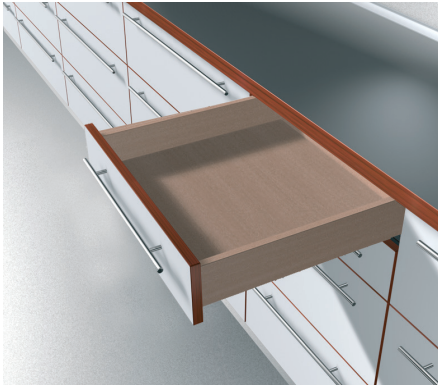


TANDEM edge BLUMOTION



TANDEM edge BLUMOTION 554H

Application

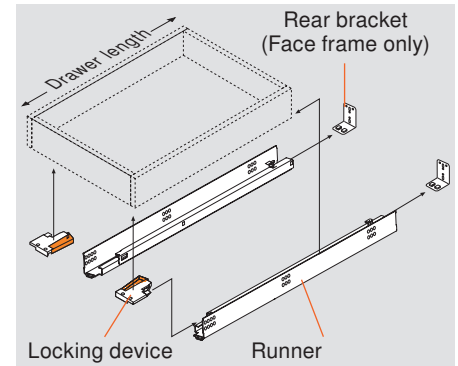


Description

- 7/8 extension concealed runners
- Face frame or frameless cabinets
- BLUMOTION soft closing
- TANDEM smooth running action
- Available in 9" to 21" lengths
- 13 (1/2") to 16 (5/8") drawer thickness
- Locking devices enable easy drawer insertion and removal
- Dynamic load capacity 75 lb*
- Static load capacity 100 lb*

* Per ANSI/BHMA 156.9 grade 1 standards on a 21" length drawer box

Basic components



Components

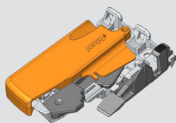
Runner set

One set required per drawer



For overall cabinet depth	Drawer length	TANDEM edge BLUMOTION
610 (24")	533 (21")	554H5330B01
533 (21")	457 (18")	554H4570B01
457 (18")	381 (15")	554H3810B01
381 (15")	305 (12")	554H3050B01
305 (12")	229 (9")	554H2290B01
Wood screw for installation		707N
System screw for installation		661.1300.HG

Standard locking device



- One right and one left required per drawer
- Minimum inside drawer width 121 (4-3/4")
- Height adjustment +3 (1/8")

Part no.

Right locking device	T51.1700.04 R
Left locking device	T51.1700.04 L
Installation screw	612TH

Screw-on bracket for frame cabinets



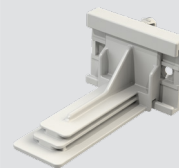
For use when installing TANDEM runners in face frame cabinets. Not necessary for frameless cabinet installation.

- Two required per drawer
- Depth and lateral self-alignment
- Zinc-coated steel
- Non-handed bracket

Part no.

Screw-on bracket	295.3750.02
Installation screw	612TH

Plug-in socket for frame cabinets



For use when installing TANDEM runners in face frame cabinets. Not necessary for frameless cabinet installation.

- Two required per drawer
- Lateral self-alignment
- Non-handed, two-piece design

Part no.

Plug-in socket	295.6510.21
Installation screw	606P

Drawer and Cabinet Specifications

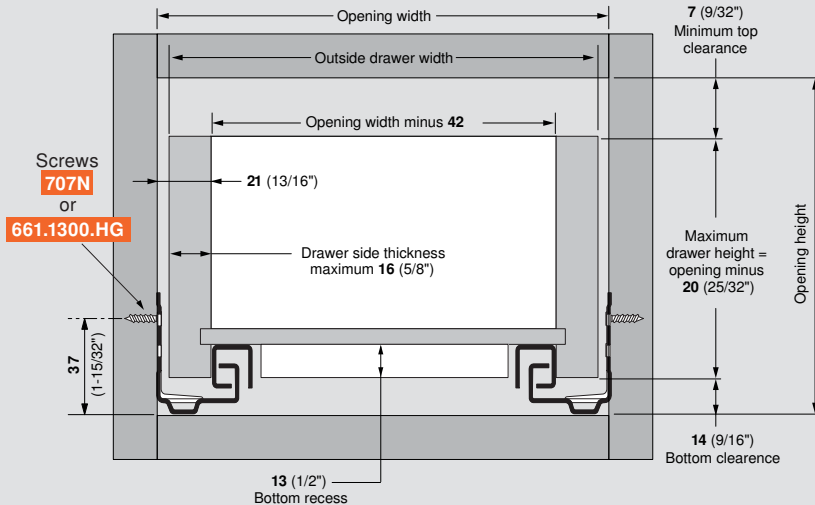
Extension	7/8	Lengths available	9 - 21"
Maximum drawer thickness	16 (5/8")	Static load capacity (ANSI/BHMA)	100 lb

TANDEM edge BLUMOTION



Drawer box specifications

Front view



NOTE: Drawer side material thickness may vary. Accurate measurement of drawer side material thickness should be used when calculating outside drawer width using the table below. Inside drawer width **must** equal opening width minus **42** (1-21/32") for TANDEM to align and function optimally.

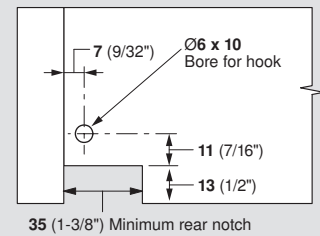
Calculating outside drawer width

For drawer side thickness	16 (5/8")	15 (19/32")	14 (9/16")	13 (1/2")	12 (15/32")
Deduct from inside cabinet width	10 (13/32")	12 (15/32")	14 (9/16")	16 (5/8")	18 (23/32")

Example: For 21" inside cabinet width and a 5/8" thick drawer, 21" minus 13/32" = 20 - 19/32" drawer width

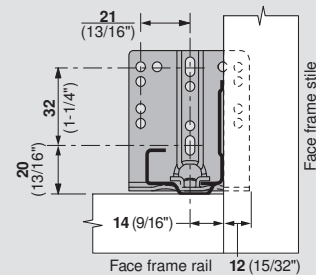
Drawer back preparation

Rear view



Rear mounting bracket

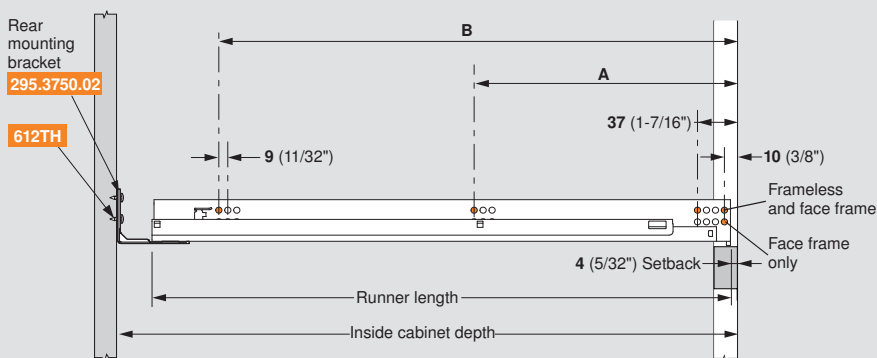
Front view



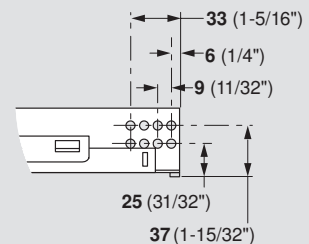
NOTE: For frame applications, use a minimum of three screws per bracket

Runner mounting specifications

Side view



Runner close-up



NOTE: The orange dots indicate fixing screw locations required to meet specified load ratings

TANDEM edge BLUMOTION	Drawer length	Inside cabinet depth with 295.3750.02 bracket		Runner length	Screw locations for frameless cabinets	
		Maximum	Minimum		A	B
554H5330B01	533 (21")	604 (23-3/4")	570 (22-7/16")	560 (22-1/16")	261 (10-9/32")	517 (20-11/32")
554H4570B01	457 (18")	527 (20-3/4")	494 (19-7/16")	484 (19-1/16")	261 (10-9/32")	453 (17-27/32")
554H3810B01	381 (15")	451 (17-3/4")	417 (16-13/32")	407 (16-1/32")	165 (6-1/2")	357 (14-1/16")
554H3050B01	305 (12")	375 (14-3/4")	341 (13-7/16")	331 (13-1/32")	165 (6-1/2")	261 (10-9/32")
554H2290B01	229 (9")	299 (11-3/4")	284 (11-3/16")	274 (10-25/32")	133 (5-1/4")	229 (9")